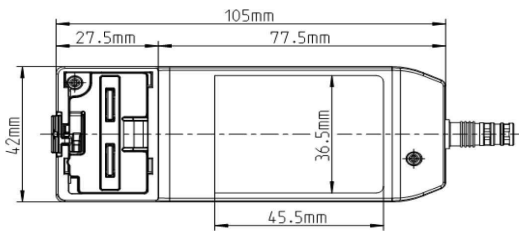


# C-LIO-4SN12-1,8M-DIN4-P-NG.R002



\*picture only for reference

## Dimensions

- Length 105mm
- Width 42mm
- Height 37mm

## Battery

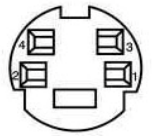
- Lithium Ion 4 cell
- Thermistor 10k  
 $\beta=3980$  to batt. Neg.

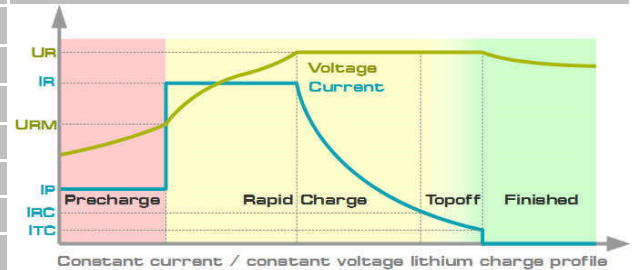
## Mechanical Features

- Compact wall plug-in housing
- Output plug Mini-Din 4 pole
- Protection Class 2
- Changeable input plug for worldwide use
- For indoor use only

State of charge	LED	Charge profile
Charge pending	Amber	<ul style="list-style-type: none"> <li>• Manufacturer recommended CC/CV</li> <li>• Low voltage / temperature Precharge</li> <li>• Topoff mode, Safety timers, Temperature monitoring</li> </ul>
Precharge	Amber 0,5s on 0,5s off	
Rapid charge	Green 0,5s on 0,5s off	
Charge finished & topoff	Green	
Fault	Red	

## Pin layout

Mini-Din 4 pole		Pin1 Plus
		Pin2 not connected
		Pin3 NTC
		Pin4 GND



Input Parameters		Output Parameters		
Input voltage	90 - 264 V	Output power	max 24 W	
Input current	9 - 620 mA	Output voltage	min. 16,44V	max. 16,77V
Input frequency	47 - 63 Hz	Output current	min. 0,81A	max. 0,99A
Efficiency	typ. 87%			

## Environmental

Operating temperature	min. 0°C	max. 80°C	
Storage temperature	min. -30°C	max. 80°C	
Humidity	max. 95%		

